



CONNECTICUT STATE DEPARTMENT OF EDUCATION

# IDEA Part B Grant

Section 611 (3-21)

Section 619 (3-5)

Updates on  
FY23 IDEA Part B  
LEA Subgrantee Application

# IDEA Part B FY 23 Subgrantee Application Updates

- Brief review of IDEA Part B
- Changes in the eGrant/eGMS - FY 23 application
- Specifics of the changes
- Updates - IDEA Part B Sections 611/119



# Individuals with Disabilities Education Act (IDEA) Part B Grant

## PURPOSE:

The purpose of the IDEA grant programs are to provide federal entitlement funds to eligible applicants to assist with the excess costs of providing special education and related services to children with disabilities (as defined by 34 Code of Federal Regulations [CFR] Sections 300.16 and 300.202).

“Feed someone a fish – feed  
someone for a day...

Teach someone to fish –  
feed someone for a lifetime ...

Slap someone with a fish –  
then you will not be liked.”

*Paula Poundstone*

# IDEA Part B

## State Application

CSDE/BSE - annually submits a state application for the two-year entitlement grant for:

### **IDEA PART B Section 611:**

*Assistance to States for the Education of Children with Disabilities Ages 3-21*

### **IDEA PART B Section 619:**

*Preschool Grants for Children with Disabilities Ages 3-5.*

Federal Fiscal Year (FFY) 22 IDEA Part B State Application. (Federal Formula)

- Administration
- Other State Activities
- **Subrecipient/Subgrantee State Award** – eligible LEAs have an application process to complete by assuring IDEA compliance and demonstrating through meeting standards and completing select items for the eligibility of a subrecipient award.

# IDEA Part B

## LEA Subrecipient/Subgrantee

### Section 611 and Section 619

Things to know:

Federal Formula for subrecipient allocations:

Part B Grant Section **611** is for **eligible children ages 3 - 21**.

Part B Grant Section **619** is for **eligible children ages 3 - 5**.

The grant covers FY 7/1/22-6/30/23 and 7/1/23- 6/30/24 and will be referred to as the **FY23 IDEA Part B Grant**.

**Two-year cycle 7/1/22 - 6/30/24** (*do not want to spread your monies out equally over the two-year grant period*).

*All reserved set aside funds* such as coordinated early intervening services (CEIS) comprehensive/mandated or voluntary or proportionate share (private-nonpublic schools) and are to be expended in first year of grant cycle.

**Do First In/First Out (FIFO)** ... ensure “old money” is spent before “new money” and that funds are allocated/obligated, expended by end of grant cycle - *do not want to send money back*.

# IDEA Part B

## Section 611 and Section 619

### Fiscal Process

#### **EGRANT FOR THE IDEA PART B SUB-GRANTEE APPLICATION**

- FY22 final award amounts are the preliminary amounts used for FY23 application.
- LEAs identified with **Significant Disproportionality** (Mandated 15% set-aside for CCEIS) - will be contacted/examined as a group but not reviewed until finalized data is available and uploaded into the applications.
- IDEA Fiscal Monitoring (“risk rubric”) is in place for all LEAs for fiscal and programmatic elements related to the use of IDEA Funds.
- MEMOS – Communication between the LEAs and IDEA Fiscal Manger is critical and memos contain important information ... **important read them!**

IDEA Part B  
Section 611 and Section 619  
Fiscal Process

More ... Things to know:

LEAs must use a separate accounting system that includes an audit trail of the expenditure of funds - including the prohibition of commingling of funds. (as defined by 34 CFR 300.162 (b)).

Grantees must be able to demonstrate that expenditures are justified (for audit purposes) for example: teacher's salaries by time records that demonstrate the percentage of time that teacher is involved in IDEA activities.

Funds must be used to supplement state, local and other federal funds and not supplant those funds. Supplanting occurs when the LEA's local special education budget is less than the previous year's local special education budget.

Maintenance of Effort (MOE) must be demonstrated for both standards: MOE Eligibility Standard and MOE Compliance Standard (LEA is responsible to keep data supporting MOE). Monitor your funding sources – no federal dollars can be used for LEA MOE!!!

# Things to know about IDEA Part B eGMS/eGrant

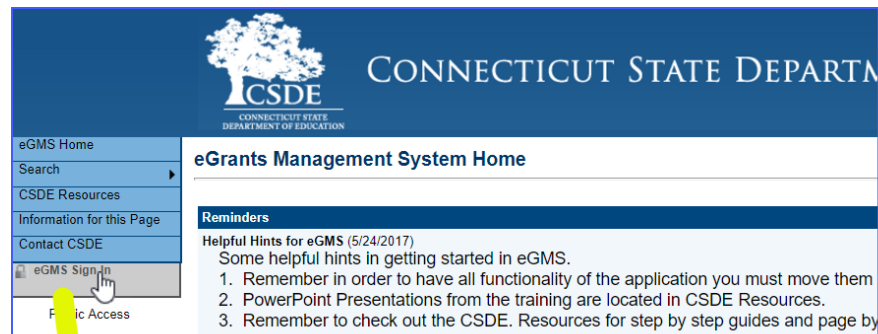
- “Preliminary” Dollars are pre-loaded for the initial application – while “Final Award” is loaded when the status changes to *Application Revision Started* and then LEA must reconcile budget(s) in the Summer/Fall.
- Calculations such as “Child Count” data are preloaded as much as possible moving forward (suggestions are welcome)
- LEA is the only one who can make edits to the application – BSE responds to the LEA through the “*CSDE Checklist*” review for comment/direction.
- *Validation ERROR* (cannot submit) if sections are not complete – need to correct before submission.
- *Validation warning* (can still submit) – LEA needs to answer the question (are you a consortia member or not?)
- LEAs identified with *preliminary Significant Disproportionality* (Mandated 15% set-aside for CCEIS) - will be contacted/examined as a group but not reviewed until finalized data is available and uploaded into the applications.

# eGRANT for LEA Subgrantee & IDEA Part B



# Accessing the System

- Site <https://connecticut.egrantsmanagement.com>
- Click Sign-In Enter Email Address and Password - “test” for test site / Use *Forgot Password* to reset password



The screenshot shows the 'Sign-In' form. It has a blue header with the text 'Sign-In'. Below the header, there are two input fields: 'Email Address:' with the value 'john.jones@ct.gov' and 'Password:'. Below the password field, there is a link that says 'Forgot your password?'. At the bottom right of the form, there is a 'Submit' button.

# Changes/Updates to eGMS FY23 IDEA Part B Application

LEA Roles -	No changes (LEA places information in and manages)
Contacts - Section	611 Contact/ 619 Contact needs to be filled in – <b>NEW: error message if not completed</b>
1.Assurances Section	No changes (all LEAs with and allocation must complete)
2.Fiscal Self- Assessment Section	No changes (all LEAs with and allocation must complete)




# LEA Roles

Role	Permissions
User Access Administrator (required)	Manage users – can add and delete to the system; view but not edit all applications
LEA Grant contact - IDEA Part B 611	Start, edit and submit IDEA Part B 611 application; View other sections and can modify these as well.
LEA Grant contact - IDEA Part B 619	Start, edit and submit IDEA Part B 619 application; View other sections and can modify these as well.
LEA Superintendent (Required)	Approve or Return Revisions.
LEA Data View (Optional)	View all applications; cannot edit.

**NOTE: Public can access the grant once it is approved and posted..**



# LEA Contacts



CONNECTICUT STATE DEPARTMENT OF EDUCATION

eGMS Home  
Search ▶  
Inbox ▶  
Planning ▶  
Funding Application ▶  
Fund Requests ▶  
Grant Summary  
LEA Document Library  
Address Book  
CSDE Resources  
Information for this Page **1**  
Request Help  
eGMS Sign Out

### Contacts

Public School District - FY 2022 - IDEA - Rev 0 - Contacts

**This is the TEST site. Please be sure to complete your work on the LIVE site.**

Save And Go To ▶

Required Contacts	
Type	Contact(s)
IDEA 611 Contact [Select at least 1 contact(s)]	<input type="text"/>
IDEA 619 Contact [Select at least 1 contact(s)]	<input type="text"/>

Trzcinski, Vicki

Test Site  
Session Timeout  
00:59:22

Save And Go To ▶

**NOTE: NEED FOR COMMUNICATION and update/only CHANGE IN APPLICATION.**



# IDEA Part B eGMS

## Communication through the eGMS

\* CSDE IDEA 611 Grant Contact/IDEA 619 Grant Contact - **only can review / respond to information provided**

- “CSDE Checklist” for specific matters in application (look at **Attention Needed** – with text explaining error and direction)
- Bulk email through the eGMS email (ensure contacts are correct)
- “Address book” gives contact information (names, email, phone)
- Can communicate through “comment” (see History log)



# Status Area

# Sections Page

The screenshot shows the CSDE Sections Page interface. At the top is the CSDE logo and navigation bar. Below it, the 'Sections' section is visible, showing 'Application Status: Not Started' and a 'Change Status To: Application Started' link. A 'View Change Log' link is also present. The main content is a table with columns for 'Description', 'Validation', and 'Print'. The table lists various sections such as 'History Log', 'Allocations', 'Contacts', 'IDEA Information', 'IDEA 611', and 'IDEA 619'. Each section has a 'Print' link and some have 'Messages' links. A 'CSDE Application Review Status Checklist' is also listed at the bottom.

Description	Validation	Print
All	<a href="#">Messages</a>	<a href="#">Print</a>
[-] History Log		<a href="#">Print</a>
<a href="#">History Log</a>		<a href="#">Print</a>
<a href="#">Create Comment</a>		
[-] Allocations		<a href="#">Print</a>
<a href="#">Allocations</a>		<a href="#">Print</a>
[-] Contacts		<a href="#">Print</a>
<a href="#">Contacts</a>		<a href="#">Print</a>
[-] IDEA Information		<a href="#">Print</a>
<a href="#">Assurances</a>		<a href="#">Print</a>
<a href="#">Fiscal Self-Assessment</a>		<a href="#">Print</a>
<a href="#">Private School Proportionate Share</a>		<a href="#">Print</a>
<a href="#">CEIS</a>		<a href="#">Print</a>
<a href="#">Program Options</a>		<a href="#">Print</a>
<a href="#">IDEA 611 Goals</a>		<a href="#">Print</a>
<a href="#">IDEA 619 Goals</a>		<a href="#">Print</a>
<a href="#">Maintenance of Effort</a>		<a href="#">Print</a>
<a href="#">Excess Cost</a>		<a href="#">Print</a>
<a href="#">Professional Development and Parent Participation</a>		<a href="#">Print</a>
<a href="#">Related Documents</a>		<a href="#">Print</a>
[-] IDEA 611	<a href="#">Messages</a>	<a href="#">Print</a>
<a href="#">Budget</a>	<a href="#">Messages</a>	<a href="#">Print</a>
<a href="#">Budget Overview</a>		<a href="#">Print</a>
<a href="#">Related Documents</a>		<a href="#">Print</a>
[-] IDEA 619	<a href="#">Messages</a>	<a href="#">Print</a>
<a href="#">Budget</a>	<a href="#">Messages</a>	<a href="#">Print</a>
<a href="#">Budget Overview</a>		<a href="#">Print</a>
<a href="#">Related Documents</a>		<a href="#">Print</a>
[-] CSDE Application Review Status Checklist		<a href="#">Print</a>
<a href="#">CSDE Application Review Status Checklist</a>		<a href="#">Print</a>
All	<a href="#">Messages</a>	<a href="#">Print</a>

History Log and Contacts

Validation Review

Information Bar

Collapse/exp and IDEA Information – completed as needed.

Each 611 & 619 has its own Budget section

Links to individual pages / upload Related Documents

CSDE Check List – Errors and direction are given



# STATUS is “NOT STARTED” – need to *CHANGE*

CONNECTICUT STATE  
DEPARTMENT OF EDUCATION

GMS Home  
Administer  
Search  
Inbox  
Planning  
Funding Application  
Grant Summary  
EA Document Library  
Address Book  
SDE Resources  
Information for this Page  
Request Help

## Sections

Ashford School District (003-000) Public School District - FY 20... A - Rev 0

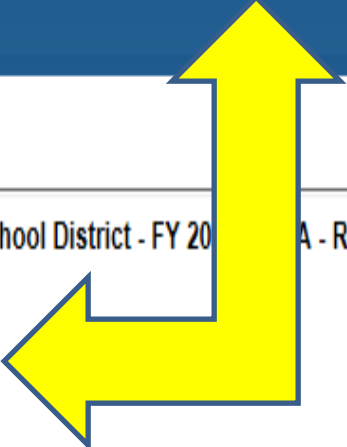
Application Status: **Not Started**

Change Status To: Application Started

[View Change Log](#)

### Description ( [View Sections Only](#) [View All Pages](#) )

All
<input type="checkbox"/> History Log



# STATUS is "STARTED"

– then *CHANGE to Complete*

**eGMS Home**  
Search  
Inbox  
Planning  
Funding Application  
Grant Summary  
LEA Document Library  
Address Book  
CSDE Resources  
Information for this Page  
Request Help  
eGMS Sign Out

### Sections

Barkhamsted School District (005-000) Public School District - FY 20... - Rev 0

Application Status: **Application Started**

Change Status To: Application Completed

[View Change Log](#)

Description ( [View Sections Only](#) [View All Pages](#) )

All

History Log

[History Log](#)

Sacharko, Erika



# Application “Status” Workflow

- Not Started
- Application Started (have to switch this on)
- Application Completed
- LEA Superintendent Approved/Returned
- CSDE / BSE Approved/Returned
  - CSDE / BSE Management Approved/Returned
  - CSDE Fiscal Approved/Returned



# IDEA Information Pages

## Assurances

- Districts must affirm assurances (except Shared Services - fiscal agent receiving no allocation)

## Fiscal Self Assessment

- All Districts (with allocations) must complete

## Private School Proportionate Share

(Consortia - check off and Fiscal Agent to address)

- Districts with Non-public in their geographic borders must complete, indicate number of parentally placed private school students (PPPSS)

## CEIS (Coordinated Early Intervening Services)

(Consortia - check off and Fiscal Agent to address)

- Districts must indicate - **My district is not voluntarily using CEIS up to 15% nor is it mandated to use CCEIS as 15% set aside of IDEA Part B.** Comprehensive (Mandated) or Voluntary must complete applicable prompts & track students impacted for 2 years.



# Changes/Updates to eGMS FY23 IDEA Part B Application

<p>3a. Private School - Proportionate Share Section</p>	<p><b>NEW:</b> Need to check Yes - if Consortium Member or Fiscal Agent –</p>
<p>3b. Private School - Proportionate Share Section</p>	<p>Updated Meaningful Consultation Form: <b>NEW:</b> List the <b>names of the schools</b> that attended the meeting – a list of email addresses is not adequate.</p>
<p>3c. Private School - Proportionate Share Section</p>	<p>Preloaded 10/1 Child Count chart for each LEA added</p> <p>Place in numbers in all required (*) data points <b>NEW:</b> “9. Additional amount from the LEA”</p>



# Private School Proportionate Share Section

## Private School Proportionate Share

Test District (000-000) Test District - FY 2022 - IDEA - Rev 0 - IDEA Part B Information

This is the TEST site. Please be sure to complete your work on the LIVE site.

Go To

10/1 Child Count from SEDAC for Students with Disabilities Chart

**Is your district part of a consortium either as a member or as a fiscal agent. You must still complete the information and the fiscal agent will compile it.**

within the district's geographical boundaries, regardless of whether the students have or do not have a services plan to complete this action. The formula is based upon <https://sites.ed.gov/idea/regs/b/appendix-b>.

**Not Applicable: There are no private schools in operation within the physical boundaries of our school district.**

Proportionate Share Worksheet Chart

Calculation for Proportionate Share	611 Grant (3-21 yr old)	619 Grant (3-5 yr old)
# PPPSS not counted in Services Plan 10/1 data	<input type="text" value="0"/>	<input type="text" value="0"/>
# Services Plan Students from 10/1 data	<input type="text" value="0"/>	<input type="text" value="0"/>
Total # PPPSS	<input type="text" value="0"/>	<input type="text" value="0"/>
# in-district SPED students from 10/1 data	<input type="text" value="0"/>	<input type="text" value="0"/>
Total # district SPED students (private+public)	<input type="text" value="0"/>	<input type="text" value="0"/>
Percent PPPSS	<input type="text" value="0.00"/> %	<input type="text" value="0.00"/> %
Total Grant Award	\$ <input type="text" value="0.00"/>	\$ <input type="text" value="0.00"/>
Proportionate Share of Total Award (Minimum Obligation)	\$ <input type="text" value="0.00"/>	\$ <input type="text" value="0.00"/>
Additional amount from the LEA	\$ <input type="text" value=""/>	\$ <input type="text" value=""/>
Proportionate Share set-aside for Private School on Budget Page	\$ <input type="text" value="0.00"/>	\$ <input type="text" value="0.00"/>

Reminder - Complete the "Meaningful Consultation Sign Off Form" with the name of the Private School, Date of Meeting and indications (signatures) of attendance. If any private/nonpublic school did not attend the consultation meeting, please forward information with additional consultation forms completed, indicating the LEA's efforts of contact and status.

Documents		
Type	Document Template	Document/Link
IDEA Consultation with Private Schools	<a href="#">IDEA Consultation with Private Schools</a>	

NEXT ST



**Not Applicable: There are no private schools in operation within the physical boundaries of our school district.**



# *Nonpublic/Private Schools Proportionate Share Calculation*

## 10/1 Child Count from SEDAC for Students with Disabilities Chart

Nexus District		Ages 3-5			Ages 6-21			Ages 3-21		
		IEP	Service Plan	Total	IEP	Service Plan	Total	IEP	Service Plan	Total
2 pc d	Anytown	57	1	58	469	3	472	526	4	530

**Be aware: the 10/1/20 Child Count numbers may be used as preliminary placeholders throughout the applications for formulas and will be updated to the 10/1/21 certified Child Count numbers when available or upon the final allocation upload.**

**NOTE: The LEA needs to look for asterisks “\*” in order to place in required data (including “0” as data place holders). If the LEA does not place in the data in the required sections – the application will not be able to be sent along for approval and an “error” message will be noted.**



# Private School Proportionate Share Calculation Worksheet/Chart

Save And Go To ▶

## 10/1 Child Count from SEDAC for Students with Disabilities Chart

Ages 3-5			Ages 6-21			Ages 3-21		
IEP	Service Plan	Total	IEP	Service Plan	Total	IEP	Service Plan	Total
74	1	75	509	3	512	583	4	587

The LEA's total number of students with disabilities as recorded from the October 1st Child Count, Services Plans and Parentally Placed Private School Students (PPPSS) are brought together to determine a Proportionate Share calculation below. It is required for LEAs that have private (not for profit) schools which fall within the district's geographical boundaries, regardless of whether the students have or do not have a services plan to complete this action. The formula is based upon <https://sites.ed.gov/idea/regs/b/appendix-b>.

Not Applicable: There are no private schools in operation within the physical boundaries of our school district.

\* Is your district part of a consortium (either as a member or a fiscal agent.) Complete the information and the fiscal agent will calculate the combined proportionate share for member districts.

Yes  No

## Proportionate Share Worksheet Chart

Calculation for Proportionate Share NOTE: the asterisk in line 1 - data must be placed in even if "0".	611 Grant (3-21 yr old) (column a)	619 Grant (3-5 yr old) (column b)
1) # PPPSS not counted in Services Plan 10/1 data (Enter the number of PPPSS in boxes to the right)	* <input type="text" value="5"/>	* <input type="text" value="11"/>
2) # Services Plan Students from 10/1 data	4	1
3) Total # PPPSS - (611=1a+1b+2a) (619=1b+2b)	<input type="text" value="20"/>	<input type="text" value="12"/>
4) # in-district SPED students from 10/1 data	<input type="text" value="583"/>	<input type="text" value="74"/>
5) Total # district SPED students (private+public)	<input type="text" value="603"/>	<input type="text" value="86"/>
6) Percent PPPSS	<input type="text" value="3.32"/> %	<input type="text" value="13.96"/> %

8) Proportionate Share of Total Award (Minimum Obligation)	\$ <input type="text" value="32,837.72"/>	\$ <input type="text" value="4,417.80"/>
9) Additional amount from the LEA	\$ <input type="text" value="0.00"/>	\$ <input type="text" value="0.00"/>
10) Proportionate Share set-aside for Private School on Budget Page	\$ <input type="text" value="32,837.72"/>	\$ <input type="text" value="4,417.80"/>

Equal 02 Budget → Additional Amt. →

Reminder - Complete the "Meaningful Consultation Sign Off Form" with the name of the Private School, Date of Meeting and indications (signatures) of attendance. If any private/nonpublic school did not attend the consultation meeting, please forward information with additional consultation forms completed, indicating the LEA's efforts of contact and status.

Documents



# CEIS Section

- Funding Application
- Fund Requests
- Expenditure Reports
- Grant Summary
- LEA Document Library
- Address Book
- CSDE Resources
- Information for this Page
- Request Help
- eGMS Sign Out

Keating, Kevin  
Test Site

### CEIS Information

The table below includes read-only information specific to your district's IDEA Part B allocations (columns A through C) and the impact these allocations have on establishing the amount of IDEA Part B funds set aside to implement Coordinated Early Intervening Services (CEIS). The amount in Column D is 15% of your district's total IDEA Part B allocations. If your district is required to implement CEIS, this is the amount of IDEA Part B allocations that must be set aside for this purpose.

If your district is voluntarily implementing CEIS, this is the maximum amount of its IDEA Part B allocations that may be set aside for this purpose, though it may set aside less. The entire amount set aside to implement CEIS may be transferred from the IDEA 611 Basic allocation in column A then the maximum amount of these funds that may be used is reported in column E. However, if the district chooses to support CEIS using IDEA 619 Preschool funds in column B, then the maximum amount of these funds that may be used is reported in column F.

A	B	C	D	E	F
IDEA 611 Allocation	IDEA 619 Allocation	Total IDEA Part B Allocation (Column A + column B)	Total that must be set aside for CCEIS when it is Required/Mandated due to Significant Disproportionality (Column C X 15%)	Maximum amount of IDEA 611 Allocation that may be set aside to support CEIS if implementation is voluntary (Column A X 15%)	Maximum amount of IDEA 619 Allocation that may be set aside to support CEIS whether implementation is required or voluntary (Column B X 15%)
\$ 659,252.00	\$ 7,986.00	\$ 667,238.00	\$ 100,085.70	\$ 98,887.80	\$ 1,197.90

My district is not voluntarily using CEIS up to 15% nor is it mandated to use CCEIS as 15% set aside of IDEA Part B.

\* Is your district part of a consortium either as a member or as a fiscal agent. You must still complete the information and the fiscal agent will compile it.

Yes  No

Complete Chart A and B if voluntarily participating CEIS or mandated CCEIS.

#### CHART A: Activities Using IDEA Part B funds for CEIS

Specific Activity	Specific Target Audience	K-3 Emphasis?	611 Cost/Money Set Aside	619 Cost/Money Set Aside	Percentage of Grant
* ceis	* 5th grade	<input type="checkbox"/>	* \$ 77,000.00	\$ 0.00	11.54 %
<a href="#">Add Row</a>					
<b>Totals</b>			<b>\$ 77,000.00</b>	<b>\$ 0.00</b>	<b>11.54 %</b>

#### CHART B: Reporting form for Students Served using set aside with IDEA Part B funds

Location(s)	Approx. # of Students Served SY 2020-21	Approx. # of Students Served (Projected) SY 2021-2022
* school	* 22	* 22
<a href="#">Add Row</a>		

LEA is mandated to undertake CCEIS and must set aside 15 percent of the IDEA Part B (see calculation D above) and complete Steps 1 and 2.

\* 1(a). Please check whether the school district will be directing a portion of IDEA Part B funds to targeted program monitoring activities throughout the school district, or if the funds will be targeted to specific schools.

Entire School District  
 Targeted Schools

1(b). If the school district is targeting activities to a specific school or schools, please identify the school(s) and the source of IDEA Part B funds that will be used for targeted activities and percentage of grant calculated:

Name of School	Using Section 611 Funds (dollar amount)	Using Section 619 Funds (dollar amount)	Total Grant	Percentage of Grant
*	\$	\$	\$ 0.00	.00 %
<b>Totals</b>				
	<b>\$ 0.00</b>	<b>\$ 0.00</b>	<b>\$ 0.00</b>	<b>.00 %</b>

\* 2. Describe the plan and activities that correspond with the CEIS Activities Budget (made by the LEA), which will be undertaken by the school district to address specific unmet program monitoring issues:



# How to record on eGrant

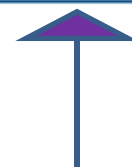
- Fund Requests
- Grant Summary
- LEA Document Library
- Address Book
- CSDE Resources
- Information for this Page 1
- Request Help
- eGMS Sign Out

## CEIS Information

The table below includes read-only information specific to your district's IDEA Part B allocations (columns A through C) and the impact these allocations have on establishing the amount of IDEA Part B funds set aside to implement Coordinated Early Intervening Services (CEIS). The amount in Column D is 15% of your district's total IDEA Part B allocations. If your district is required to implement CEIS, this is the amount of IDEA Part B allocations that must be set aside for this purpose.

If your district is voluntarily implementing CEIS, this is the maximum amount of its IDEA Part B allocations that may be set aside for this purpose, though it may set aside less. The entire amount set aside to implement CEIS may be transferred from the IDEA 611 Basic allocation in column A then the maximum amount of these funds that may be used is reported in column E. However, if the district chooses to support CEIS using IDEA 619 Preschool funds in column B, then the maximum amount of these funds that may be used is reported in column F.

A	B	C	D	E	F
IDEA 611 Allocation	IDEA 619 Allocation	Total IDEA Part B Allocation (Column A + column B)	Total that must be set aside for CCEIS when it is Required/Mandated due to Significant Disproportionality (Column C X 15%)	Maximum amount of IDEA 611 Allocation that may be set aside to support CEIS if implementation is voluntary (Column A X 15%)	Maximum amount of IDEA 619 Allocation that may be set aside to support CEIS if whether implementation is required or voluntary (Column B X 15%)
\$ 3,923,625.00	\$ 97,156.00	\$ 4,020,781.00	\$ 603,117.15	\$ 588,543.75	\$ 14,573.40



Test Site



# Notice of Intent to Use IDEA Part B funds for CEIS in eGMS

## *Three options on the Sub-grantee Application*

**“My district is not voluntarily using CEIS up to 15% nor is it mandated to use CCEIS as 15% set aside of IDEA Part B.”**

- *Clicking* this allows for the LEA to identify – they are:  
**Not doing** Coordinated Early Intervening Services (CEIS) / Comprehensive Early Intervening Services (CCEIS).
- *Not clicking* allows for the LEA to identify – they are either:  
**Voluntary:** allows the LEA to set aside up to 15% of grant to fund *non-special education* early intervening services for at-risk non-disabled students in K-12.

OR

**Mandated is *clicked on* in the eGMS:** Required set-aside 15% of their IDEA Part B grant as a result of data analysis by the CSDE which has identified an LEA with (potential) significant disproportionality.



# Notice of Intent to

- Fund Requests ▶
- Expenditure Reports ▶
- Grant Summary
- LEA Document Library
- Address Book
- CSD E Resources
- Information for this Page **1**
- Request Help
- eGMS Sign Out

Keating, Kevin

Test Site

### CEIS Information

The table below includes read-only information specific to your district's IDEA Part B allocations (columns A through C) and the impact these allocations have on establishing the amount of IDEA Part B funds set aside to implement Coordinated Early Intervening Services (CEIS). The amount in Column D is 15% of your district's total IDEA Part B allocations. If your district is required to implement CEIS, this is the amount of IDEA Part B allocations that must be set aside for this purpose.

If your district is voluntarily implementing CEIS, this is the maximum amount of its IDEA Part B allocations that may be set aside for this purpose, though it may set aside less. The entire amount set aside to implement CEIS may be transferred from the IDEA 611 Basic allocation in column A then the maximum amount of these funds that may be used is reported in column E. However, if the district chooses to support CEIS using IDEA 619 Preschool funds in column B, then the maximum amount of these funds that may be used is reported in column F.

A	B	C	D	E	F
IDEA 611 Allocation	IDEA 619 Allocation	Total IDEA Part B Allocation (Column A + column B)	Total that must be set aside for CCEIS when it is Required/Mandated due to Significant Disproportionality (Column C X 15%)	Maximum amount of IDEA 611 Allocation that may be set aside to support CEIS if implementation is voluntary (Column A X 15%)	Maximum amount of IDEA 619 Allocation that may be set aside to support CEIS whether implementation is required or voluntary (Column B X 15%)
\$ 659,252.00	\$ 7,986.00	\$ 667,238.00	\$ 100,085.70	\$ 98,887.80	\$ 1,197.90

My district is not voluntarily using CEIS up to 15% nor is it mandated to use CCEIS as 15% set aside of IDEA Part B.

\* Is your district part of a consortium either as a member or as a fiscal agent. You must still complete the information and the fiscal agent will compile it.

Yes  No

Complete Chart A and B if voluntarily participating CEIS or mandated CCEIS.

Is your district part of a consortium either as a member or as a fiscal agent. You must still complete the information and the fiscal agent will compile it.

SUBJECT ALLOCATION	SUBJECT GROUP ADDRESS	FISCAL AGENT	PERCENTAGE OF GRANT
Totals			\$ 77,000.00
			\$ 0.00
			11.54 %

### CHART B: Reporting form for Students Served using set aside with IDEA Part B funds

Location(s)	Approx. # of Students Served SY 2020-21	Approx. # of Students Served (Projected) SY 2021-2022
* school	22	22

[Add Row](#)

My district is not voluntarily using CEIS up to 15% nor is it mandated to use CCEIS as 15% set aside of IDEA Part B.



# Coordinated Early Intervening Services (CEIS)

Things to know about CEIS:

- Under IDEA the provision of CEIS can be voluntary or mandatory (comprehensive).
- CEIS are services to help children who need additional academic or behavioral support to be successful in school. They can include professional development and educational and behavioral evaluations, services, and supports
- LEA voluntarily identifies “set-aside” funds (up to 15% for nondisabled students K-12) for CEIS.
  - **Budget with preliminary dollars**
  - **Adjust funds (if mandated) when final award given**
  - **Liquidate funds in year one of grant.**
- LEA is required to track the numbers of students who have received CEIS services and report how many of these students are later identified as requiring special education services (for two years).
- Complete Sections A & B of the application and develop a CEIS Goal (under Goal Section) with a tagged activity related to the CEIS Budget (03).
- MOE – an LEA MOE Adjustment or LEA MOE Reduction will be reduced by the amount of funds expended by an LEA for early intervening services under 34 CFR §300.226.



# Changes/Updates to eGMS FY23 IDEA Part B Application

4a.CEIS Section	<b>NEW:</b> Need to check Yes - if Consortium Member of Fiscal Agent
4b.CEIS Section	Clarifying language (IDEA Part B & current dates) and need to make a goal under the Goals Section.
4c.CEIS Section	<b>Under # Approximate</b> Students Served
4d.CEIS Section	LEAs identified with <i>preliminary</i> substantial disproportionality will have the mandated Comprehensive Coordinated Early Intervening Services (CCEIS) section checked (like last year). Requires 15% set-aside of entire award and LEA must complete the section, CEIS budget activities and report # of students impacted (for two years).



# Notice of Mandated Use IDEA Part B funds for CCEIS in eGMS

## Mandated:

- Required Comprehensive Coordinated Early Intervening Services (CCEIS) set-aside 15% of their IDEA Part B total award (both 611 & 619 grants combined) - see Column “D” on CEIS section page.
- **Use for Disabled (cannot be exclusively) and Non-Disabled students ages 3 through grade 12.**
- Require completion of Box 1a/1b and Box 2 (explanation of activities to address the area(s) identified). As well a CEIS Goal (under Goal Section that can be tagged to the CEIS Budget (03)
- Preliminary notification to LEA will automatically clicked and numbers calculated.



# IDEA Information Pages (cont.)

## **IDEA 611 Goals (If a Line Item – need a Goal/Activity connection)**

- Must be completed by districts for purpose of grant with 611 allocations (Tag 01 Budget, Tag 02 Private School Activities Budget, Tag 03 CEIS Activities Budget)
- Districts without 611 allocations indicate “Not Applicable”

## **IDEA 619 Goals (If a Line Item – need a Goal/Activity connection)**

- Must be completed by districts for purpose of grant with 619 allocations (Tag 01 Budget, Tag 02 Private School Activities Budget, Tag 03 CEIS Activities Budget);
- Districts without 619 allocations indicate “Not Applicable”

## **Maintenance of Effort**

- Must complete both Eligibility Standard and Compliance Standard (except fiscal agent which receives no allocations) – 1.4v only

## **Excess Cost**

- Sections for Elementary and Secondary general education calculations; LEA can check “Not Applicable” for the appropriate section

## **Professional Development and Parent Participation**

- Complete this page as best as possible to indicate activities throughout the year



# IDEA Goals Section- eGMS

## SECTION 611 (3-21yr olds)

### IDEA 611 Goal

- Must be completed with activities abiding by IDEA Part B for students with disabilities ages 3-21 with 611 allocations;
- Without 611 allocations indicate “Not Applicable”.
- Max of 6 Goals/Activities that will be “tagged to” 611 - Public School Activities Budget (01)

### IDEA 611 Private School Goals

- Must be completed by LEA with Private School Proportionate Share Calc.
- Without 611 Proportionate Share Calc indicate “Not Applicable”.
- Max of 6 Goals/Activities that will be “tagged to” 611 - Private School Activities Budget (02)

### IDEA 611 Coordinated Early Intervening Services (CEIS) Goals

- Must be completed by LEA which identified CEIS/CCEIS
- Not doing CEIS/CCEIS indicate such.
- Max of 6 Goals/Activities that will be “tagged to” 611 – CEIS Activities Budget (03)

## SECTION 619 (3-5yr olds)

### IDEA 619 Goal

- Must be completed with activities abiding by IDEA Part B for students with disabilities ages 3-5 with 619 allocations (**check box**);
- Without 619 allocations indicate “Not Applicable”.
- Max of 6 Goals/Activities that will be “tagged to” 619 - Public School Activities Budget (01)

### IDEA 619 Private School Goals

- Must be completed by LEA with Private School Proportionate Share Calc.
- Without 619 Proportionate Share Calc indicate “Not Applicable”.
- Max of 6 Goals/Activities that will be “tagged to” 619 - Private School Activities Budget (02)

### IDEA 619 Coordinated Early Intervening Services (CEIS) Goals – when begun

- Must be completed by LEA which identified CEIS/CCEIS
- Not doing CEIS/CCEIS indicate such.
- Max of 6 Goals/Activities that will be “tagged to” 619 – CEIS Activities Budget (03)



# Changes/Updates to eGMS FY23 IDEA Part B Application

5. Program Options Section	No Changes
6a. IDEA 611 Goals Section	<b>NEW:</b> Changed so goal/activity is to be “tagged” to 01 Public School Activities Budget (line item) Note: a Maximum of 6 Goals for each budget
6b. IDEA 619 Goals Section	<b>NEW:</b> Changed so goal/activity is to be “tagged” to 01 Public School Activities Budget (line item) Note: a Maximum of 6 Goals for each budget
6c. IDEA 619 Goals Section <i>CHECK BOX</i>	<b>NEW: CHECK off at top:</b> <b>*I understand that the following goals and activities delineated by line items in the 619 budget are connected with 3-5 year olds</b>
6d. Private School Goals	<b>NEW:</b> For both 611 and 619 – if <u>appropriate</u> ensure to <b>write goal/tag activity to 02 Private School Activities Budget</b> (line Item)
6e. CEIS Goals	<b>NEW:</b> For 611 and 619 (when needed) – if <u>appropriate</u> ensure to <b>write goal/tag activity to 03 CEIS Activities Budget</b> (line Item)



# IDEA Information Pages (cont.)

## IDEA 619 Goals

Test District (000-000) Test District - FY 2023 - IDEA - Rev 0 - IDEA Part B Information

Go To ▶

Not Applicable (for districts with no 619 Allocation)

\* I understand that the following goals and activities delineated by line items in the 619 budget are connected with 3-5 year olds

Public Goals, Related Activities and Equitable Access to IDEA, Part B Grants (for use with Function Code 01 in the 619 budget)

Not Applicable (for districts with no 619 Allocation)

\* I understand that the following goals and activities delineated by line items in the 619 budget are connected with 3-5 year olds

Line Item	Goal	Activity	Equitable Access

Not Applicable (for districts not using CEIS/CCEIS)

CEIS/CCEIS Goals, Related Activities and Equitable Access to IDEA, Part B Grants (for use with Function Code 03 in the 619 budget)

CEIS/CCEIS Goal (Please number each goal starting with 1)	CCEIS/CCEIS planned special education activities	Describe the steps to ensure equitable access to, and participation in, the applicant's federally assisted program for students, teachers and program beneficiaries with special needs.

Go To ▶



## MOE – plain language

The eligibility standard requires that the LEA must budget at least the same amount or more for special education as the LEA spent for the most recent fiscal year for which information is available, unless allowable exceptions or adjustments apply, in order to be eligible for the IDEA Part B grant award.

The compliance standard requires that the LEA must not reduce the level of expenditures for special education below the level of expenditures from the previous fiscal year the district met MOE (subsequent year rule) unless allowable exceptions or adjustments apply.

**NOTE:** LEA is to keep all data that demonstrate that the LEA has satisfied MOE for auditing purposes. Although the district does not have to complete all four methods, calculating and tracking all four methods with the information available for "look back" and ease for future comparison years is recommended



# Changes/Updates to eGMS FY23 IDEA Part B Application

7a.MOE	<p>Clarifying language</p> <p><b>No Federal Dollars</b> can be used for IDEA LEA MOE: such as ESSER, ARP, CFR or IDEA Part B – cannot demonstrate LEA MOE.</p>
7b.MOE	<p>REMINDER: Use Education Financial System (EFS) financial end of the year reports for 2020-2021, regarding special education expenditures for MOE Compliance.</p>
7c.MOE	<p>REMINDER: Projected Special Education Budget for 2022-2023 regarding special education budget for MOE Eligibility.</p>
7d.MOE	<p><b>NEW: Only submitting one LEA MOE Calculator (1.4v)</b></p> <p><b>No Waiver for IDEA Part B LEA MOE.</b></p> <p><b>No Federal Dollars can be used.</b></p> <p><b>COVID IS NOT AN EXCEPTION FOR LEA MOE shortfall.</b></p>



# IDEA Part B LEA MOE

- **Eligibility** for IDEA funding is based upon a LEA's demonstration of its "Maintenance of Effort" (MOE).
- **Supplanting** occurs when the LEA's local special education *proposed budget* is less than local special education *previous year's expenditures that met MOE*. Do not meet MOE **Eligibility** – do not get the IDEA Part B award.
- **MOE Eligibility Standard** is measured through budgeting the same or more for special education compared against data available of expenditures when MOE was met.
- **MOE Compliance Standard** is measured through expending the same or more for special education compared against expenditures to the subsequent year that MOE was met.

If a shortfall is realized and preliminary MOE failure is noted after comparison have been completed, **allowable exceptions** and adjustments are applied. **COVID IS NOT AN ALLOWABLE EXCEPTION.**

- The consequence for failure to maintain effort includes a **recovery action** using non-federal dollars to be returned to OSEP (34 CFR 300.203 (d)).



# LEA MOE Calculator

CIFR (Center for IDEA Fiscal Reporting) developed the LEA MOE Calculator to help:



- Document local, or state and local, fiscal effort in an LEA for the education of children with disabilities.
- Determine whether that effort meets the IDEA's LEA MOE requirements (34 CFR §300.203).

## MOE Calculator

Is an excel spreadsheet –  
with the bottom of the worksheet broken into clusters of 3 Tabs:

**RED** Amounts Tab Page

**BLUE** MOE calculator Tab Page

**ORANGE** Exception and Adjustment Tab Page

*The cluster is based on the year being worked on.*

*SHADED SPACES* are for data entry.

*WHITE SPACES* are filled from other data.

**(Never Cut/Paste - always COPY/Paste)**

4. Multi-Year MOE Summary

5. 20-21 Amounts

6. 20-21 MOE

7. 20-21 Exc & Adj

8. 21-22 Amounts

9. 21-22 MOE

# LEA MOE Calculator

## 1.4 Version Extended

- 1.4v is required as part of FY 23 LEA Subgrantee Application.
- The MOE Calculators can be found in the FY22 Application under the MOE Section, Uploaded Documents or wherever the LEA stores the information for future audits.
- Complete 1.4 Version for LEA MOE Compliance first (2020/2021 Special Education Expenditures)
- Complete 1.4 Version Extended for LEA MOE Eligibility (2022/2023 Projected Budget of Special Education).





# MOE v. 1.4 Tab 4 Multi-Year Summary worksheet

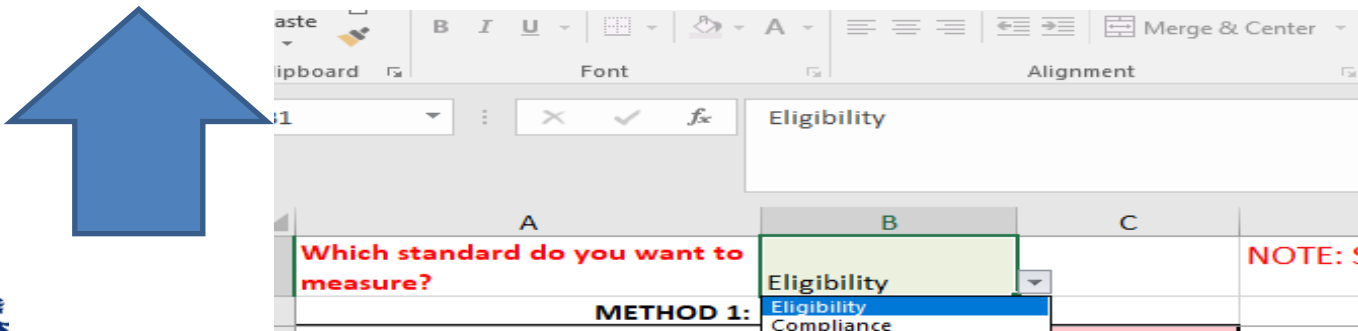
## MOE Compliance Standard –

**Step 2)** LEA MOE Status of *Met*, *Met with Exceptions* or *Did Not Meet* – is displayed in **ROW 8** on **Tab 4 Summary Worksheet**. Choose status that will be reported on the MOE Section in FY23 application.

	Fiscal Year	Standard	Child Count	Local Total Amount	Local Total MOE Result	State and Local Total Amount	State and Local Total MOE Result	Local Per Capita Amount	Local Per Capita MOE Result	State and Local Per Capita Amount
2										
6	2018-2019	Compliance (Expenditures)	144	\$ 4,568,476.00	Met	\$ 4,836,903.00	Met	\$ 31,725.53	Met	\$ 33
7	2019-2020	Compliance (Expenditures)	224	\$ 5,031,877.97	Met	\$ 5,374,161.97	Met	\$ 22,463.74	Did Not Meet	\$ 23
8	2020-2021	Compliance (Expenditures)	223	\$ 5,810,307.64	Met	\$ 6,640,307.64	Met	\$ 26,055.19	Did Not Meet	\$ 29
9	2021-2022	Eligibility (Budget)	198	\$ 5,810,307.64	Met	\$ 6,640,307.64	Met	\$ 29,344.99	Met with Exceptions or Adjustments	\$ 33
10	2022-2023	Eligibility (Budget)	224	\$ 5,810,307.64	Met	\$ 6,640,307.64	Met	\$ 25,938.87	Did Not Meet	\$ 29
11	2023-2024	Eligibility (Budget)								

**NOTE:** If **Eligibility** is in cell **B8** - go back to step 1 and start over.

**Tab 6. 20-21 MOE (toggle B1 from Eligibility to Compliance).**





## LEA MOE 1.4 Tab 4 Multi-Year Summary worksheet

Complete Eligibility Standard for 2022-2023

Eligibility –

**Step 2a) Tab 11. 22-23 Amounts** (fill in projected special education budget columns on left) Place in **B1 Projected Child Count** .

**Step 2b) Examine LEA MOE Status** of *Met, Met with Exceptions or Did Not Meet* – is displayed in **ROW 10 Tab 4 Summary Worksheet**. Choose status that will be reported on the MOE Section in FY23 application.

	Fiscal Year	Standard	Child Count	Local Total Amount	Local Total MOE Result	State and Local Total Amount	State and Local Total MOE Result	Local Per Capita Amount	Local Per Capita MOE Result	State and Local Per Capita Amount
2										
6	2018-2019	Compliance (Expenditures)	144	\$ 4,568,476.00	Met	\$ 4,836,903.00	Met	\$ 31,725.53	Met	\$ 3
7	2019-2020	Compliance (Expenditures)	224	\$ 5,031,877.97	Met	\$ 5,374,161.97	Met	\$ 22,463.74	Did Not Meet	\$ 2
8	2020-2021	Compliance (Expenditures)	223	\$ 5,810,307.64	Met	\$ 6,640,307.64	Met	\$ 26,055.19	Did Not Meet	\$ 2
9	2021-2022	Eligibility (Budget)	198	\$ 5,810,307.64	Met	\$ 6,640,307.64	Met	\$ 29,344.99	Met with Exceptions or Adjustments	\$ 3
10	2022-2023	Eligibility (Budget)	224	\$ 5,810,307.64	Met	\$ 6,640,307.64	Met	\$ 25,938.87	Did Not Meet	\$ 2
11	2023-2024	Eligibility (Budget)								

Ready | ... 3. Getting Started | 4. Multi-Year MOE Summary | 5. 20-21 Amounts | 6. 20-21 MOE | 7. 20-21 Exc & Adj | 8. 21-22 Amounts | 9. 21-22 MOE | 10. 21-22

Display Settings



## Compliance/Eligibility – *Did Not Meet*

### LEA MOE 1.4v Tab 4 Multi-Year Summary worksheet

**Step 3a) MOE Compliance status** - Examine **LEA MOE Status in Row 8** - if *Did Not Meet* across all four methods in Row 8 – complete Tab 7. 20-21 Exc. & Adj. NOTE: Repayment Amount in Column O. Go back to Tab 4 and determine status – report on MOE section in application. If after this step the *Did Not Meet* remains, **contact BSE**.

	Fiscal Year	Standard	Child Count	Local Total Amount	Local Total MOE Result	State and Local Total Amount	State and Local Total MOE Result	Local Per Capita Amount	Local Per Capita MOE Result	State and Local Per Capita Amount	State and Local Per Capita MOE Result	Amount of IDEA Part B, Section 611 Subgrant	Amount of IDEA Part B, Section 619 Subgrant	Total IDEA Part B Subgrant	Repayment Amount (Compliance Test Only)
2	2019-2020	Compliance (Expenditures)	224	\$ 5,031,877.97	Met	\$ 5,374,161.97	Met	\$ 22,463.74	Did Not Meet	\$ 23,991.79	Did Not Meet	\$ 316,922.00	\$ 14,065.00	\$ 330,987.00	
8	2020-2021	Compliance (Expenditures)	223	\$ 3,810,307.64	Did Not Meet	\$ 4,040,307.64	Did Not Meet	\$ 17,086.58	Did Not Meet	\$ 18,117.97	Did Not Meet	\$ 316,455.00	\$ 14,289.00	\$ 330,744.00	\$ 330,744.00
9	2021-2022	(Budget)	198	\$ 5,810,307.64	Met	\$ 6,640,307.64	Met	\$ 29,344.99	Exceptions or Adjustments	\$ 33,536.91	Exceptions or Adjustments	\$ 328,676.00	\$ 14,364.00	\$ 343,040.00	\$ -
10	2022-2023	Eligibility (Budget)	224	\$ 4,110,307.64	Did Not Meet	\$ 4,420,307.64	Did Not Meet	\$ 18,349.59	Did Not Meet	\$ 19,733.52	Did Not Meet	\$ 328,676.00	\$ 14,364.00	\$ 343,040.00	\$ -
11	2023-2024	Eligibility (Budget)												\$ -	\$ -

**Step 3a) MOE Eligibility status** - Examine **LEA MOE Status in Row 10** - if *Did Not Meet* across all four methods in Row 10 – complete Tab 13. 22-23 Exc. & Adj. Go back to tab 4 and determine status – report on MOE section in application. If after this step the *Did Not Meet* remains, **contact BSE**.

	Fiscal Year	Standard	Child Count	Local Total Amount	Local Total MOE Result	State and Local Total Amount	State and Local Total MOE Result	Local Per Capita Amount	Local Per Capita MOE Result	State and Local Per Capita Amount	State and Local Per Capita MOE Result	Amount of IDEA Part B, Section 611 Subgrant	Amount of IDEA Part B, Section 619 Subgrant	Total IDEA Part B Subgrant	Repayment Amount (Compliance Test Only)
7	2019-2020	Compliance (Expenditures)	224	\$ 5,031,877.97	Met	\$ 5,374,161.97	Met	\$ 22,463.74	Did Not Meet	\$ 23,991.79	Did Not Meet	\$ 316,922.00	\$ 14,065.00	\$ 330,987.00	
8	2020-2021	Compliance (Expenditures)	223	\$ 3,810,307.64	Did Not Meet	\$ 4,040,307.64	Did Not Meet	\$ 17,086.58	Did Not Meet	\$ 18,117.97	Did Not Meet	\$ 316,455.00	\$ 14,289.00	\$ 330,744.00	\$ 330,744.00
9	2021-2022	Eligibility (Budget)	198	\$ 5,810,307.64	Met	\$ 6,640,307.64	Met	\$ 29,344.99	Met with Exceptions or Adjustments	\$ 33,536.91	Met with Exceptions or Adjustments	\$ 328,676.00	\$ 14,364.00	\$ 343,040.00	\$ -
10	2022-2023	Eligibility (Budget)	224	\$ 4,110,307.64	Did Not Meet	\$ 4,420,307.64	Did Not Meet	\$ 18,349.59	Did Not Meet	\$ 19,733.52	Did Not Meet	\$ 328,676.00	\$ 14,364.00	\$ 343,040.00	\$ -
11	2023-2024	Eligibility (Budget)												\$ -	\$ -

# MOE SECTION – 1.4V ONLY

## Directions

There are two components to MOE, the eligibility standard and the compliance standard. The latest version of the MOE Calculator must be uploaded to the grant application (go to related documents and document/link in the grant - click "upload new").

Under CFR 300.203 the eligibility standard requires that the LEA must budget at least the same amount or more for special education as the LEA spent for the most recent fiscal year for which information is available, unless allowable exceptions or adjustments apply, in order to be eligible for the IDEA Part B grant award. The compliance standard requires that the LEA must not reduce the level of expenditures for special education below the level of expenditures from the previous fiscal year the district met MOE (subsequent year rule) unless allowable exceptions or adjustments apply.

REMINDER: No Federal Dollars can be used to demonstrate LEA MOE. Use the Education Financial System (EFS) financial end of the year reports regarding special education expenditures on the MOE calculator amounts tab and then compare to the last time the LEA met MOE in a particular method (subsequent year rule) on the MOE calculator summary page.

NOTE: LEA is to keep all data that demonstrate that the LEA has satisfied MOE for auditing purposes. Although the district does not have to complete all four methods, calculating and tracking all four methods with the information available for "look back" and ease for future comparison years is recommended.

Not Applicable (this option for Shared Services only)

### Eligibility Standard - refer to MOE v1.4

The eligibility standard is an LEA budgets for the education of children with disabilities, at least the same amount from at least one of the following sources: (i) local funds only; (ii) the combination of State and local funds; (iii) Local funds only on a per capita basis; or (iv) the combination of State and local funds on a per capita basis, as the LEA spent for that purpose from the same source for the most recent fiscal year for which information is available.

Not Met

Checking "NOT MET" indicates that the LEA is unable to meet the MOE Eligibility Standard and would be ineligible for FY 23 IDEA Part B funds. Please contact the Bureau of Special Education to explore options regarding exceptions (see below) and the LEA's projected Special Education budget.

Met

Met With Exceptions

### Compliance Standard - refer to MOE v1.4

The compliance standard is an LEA must maintain (or increase) the amount of local or state and local funds it expends for the education of children with disabilities when compared from at least one of the following sources: (i) local funds only; (ii) combined State and local funds; (iii) per capita basis of local funds only; or (iv) per capita basis of the combined State and local funds below the level of those expenditures from the same source for the preceding fiscal year (subsequent year rule).

Not Met

Checking "NOT MET" indicates that the LEA is unable to meet the MOE Compliance Standard. Please contact the Bureau of Special Education to explore options regarding adjustments and exceptions (see below) regarding actual Special Education expenditures.

Met

Met With Exceptions

The LEA is responsible for uploading the completed MOE Compliance Standard and MOE Eligibility Standard. The MOE Compliance will be completed on the MOE Calculator 1.4 (found on the FY22 IDEA Part B LEA Application) - Tab 5. 20-21 Amounts (fill in with actual special education expenditures - columns on right). The MOE Eligibility will be completed on the MOE Calculator 1.4v (found on the FY 22 IDEA Part B LEA Application) - Tab 11. 22-23 Amounts (fill in with projected special education budget - columns on left)."

### Instructions for uploading MOE Calculators

1. Save the data entered on this page by using the Save and Go To button.
2. Using the Funding Application menu item, open the Funding Applications page, select the Fiscal Year 2022 and open the 2022 IDEA application.
3. Download the completed Calculator from the 2022 IDEA Application Maintenance of Effort Page.



# MOE SCENARIOS

- The language in the Revision Summary states:  
We are requesting to offset salaries and benefits with costs previously allocated for purchased services, supplies and property. Many of the allocations for these line items are also included in newly approved ARP and ESSER Special Education grants.

## **The problem**

IDEA Funds are now “freed up” to pay for elements (that in the past were paid for with Local or State funds), which now due to ESSER or ARP IDEA are being paid for these funds.

Thus the use IDEA funds to pay for salaries and benefits (supplies) that were not in the IDEA budget before (paid for under Local or State funds) but now are being paid for with federal dollars would most certainly impact MOE.

REMINDER: No federal dollars can be used for LEA MOE.


Modified from CIFR



# MOE RESOURCE

## Quick Reference Guide on the Local Educational Agency Maintenance of Effort Adjustment and Use of Freed-Up Funds

COVID-19 Resources: Tools and Resources to Navigate IDEA Fiscal Challenges Resulting from the Pandemic →

 Home Resources ▾ Events News About ▾ Contact  Search


### Resources

PART B - ALLOCATION OF IDEA PART B SUBGRANTS TO LEAS, PART B - COORDINATED EARLY INTERVENING SERVICES (CEIS)

#### Quick Reference Guide on the Local Educational Agency Maintenance of Effort Adjustment and Use of Freed-Up Funds

[Get this resource](#)

This CIFR-developed reference guide is designed to help SEA and LEA staff understand the requirements of the LEA MOE adjustment under IDEA. The guide includes questions and answers to highlight the fiscal requirements, with calculation examples and suggested processes for SEAs to monitor the use of funds freed up by the adjustment.



**DATE**  
Feb 2022

**AUTHOR**  
Center for IDEA Fiscal Reporting  
(CIFR)

[← Back to Resources](#)

<https://cifr.wested.org/resource/qrg-lea-moe-adjustment-use-of-freed-up-funds/>



Modified from CIFR

# Changes/Updates to eGMS FY23 IDEA Part B Application

<p>8a.Excess Cost - Federal Calculation</p>	<p>Special Ed kids are General Ed kids first – thus determine a Per Pupil Expenditure (PPE) with <i>General Education budget</i>. Must be a positive number greater than “0” – if not an error message.</p>
<p>8b.Excess Cost - Federal Calculation</p>	<p>EFS/ End of the Year Report for General Education for 2020-2021 (proportionally for Elementary and Secondary).</p>
<p>8c.Excess Cost- Federal Calculation</p>	<p>Line #17 preceding school year student census (10/1/20 proportionally for Elementary and Secondary) – aligns with EFS report from last year</p>
<p>8d. Excess Cost- Federal Calculation</p>	<p>Line #19 current school year SWD child count student census (10/1/21 proportionally for Elementary and Secondary)</p>



# IDEA Part B- Excess Cost Section

## *Excess Costs Calculations*

- Section 300.16 requires LEAs to compute the minimum average amount of per pupil expenditure (PPE);
- General Education Budget is used
- separately for students in both **elementary and secondary** levels.

NOTE: This is a federal requirement and has **nothing to do with** CT's Excess Costs Reimbursement Grant.



# IDEA Part B- Excess Cost Section

## *Excess Costs Calculations*

### Directions

The LEA must use the October 1st student census to determine per pupil expenditure (PPE). Average daily attendance cannot be used. This is a federal requirement and is NOT the same as CT's Excess Costs Reimbursement Grant. LEAs must compute the minimum average amount of PPE - separately for students in both elementary and secondary levels.

Excess costs are those costs for the education of an elementary school or secondary school student with a disability that are in excess of the average annual PPE in an LEA during the preceding school year. An LEA must spend at least the average annual PPE on the education of an elementary school or secondary school child with a disability before funds under Part B of the Act are used to pay the excess costs of providing special education and related services.

The LEA is required to compute the minimum average amount separately for children in elementary schools and for children in secondary schools. LEAs may not compute the minimum average amount it must spend on the education of children with disabilities based on a combination of the enrollments in its elementary schools and secondary schools (Section 602(8) of the Act and Section 300.16.)

Not Applicable

### Elementary Level Excess Cost

#### A: The LEA expended the following amounts of funds from the preceding school year:

1.	From local tax funds (elementary only)	* \$	9,019,079.00
2.	From state funds (elementary portion only)	* \$	348,884.00
3.	From federal grants (elementary portion only)	* \$	146,470.00
4.	<b>TOTAL Expenditures on elementary portion</b>	\$	9,514,433.00

#### B: Capital outlay and debt services must be subtracted from the above total:

5.	Total expenditure on elementary portion (from #4)	\$	9,514,433.00
6.	Less capital outlay and debt services (elementary portion only)	* \$	0.00
7.	<b>TOTAL Expenditures on elementary less outlay/debt</b>	\$	9,514,433.00

#### C: The LEA received the following funds from various sources (include only awards for the school year in question-DO NOT include any carry-over funds):

8.	Local funds for special education expenditures-elementary (from End of the Year Report)	* \$	1,543,681.00
9.	Federal IDEA Part B - 619 funds	* \$	3,734.00
10.	Federal IDEA Part B - 611 funds (Elementary portion)	* \$	98,959.00
11.	Federal Title I (part A), III (parts A and B) or other federal programs, excluding federal school lunch funds (proportion)	* \$	43,777.00
12.	Title I (part A), III (parts A and B) programs from state and local funds	* \$	0.00
13.	Other elementary non-local funds (gifts, etc.) (proportion)	* \$	0.00
14.	<b>Sub-total elementary funds</b>	\$	1,690,151.00
15.	<b>TOTAL (#7 - #14)</b>	\$	7,824,282.00

#### D: Average per pupil expenditures (PPE) for all elementary students:

17.	Preceding school year LEA elementary student census	*	511
-----	---	---	-----

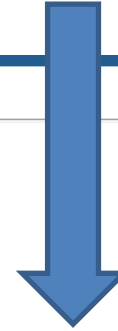
19.	Current school year LEA elementary of students with disabilities census	*	54
20.	PPE-elementary level (from #18)	\$	15,311.71
21.	<b>Total minimum amount of local funds LEA must spend for education of enrolled elementary students with disabilities before accessing IDEA funds (#19 x #20)</b>	\$	826,832.15

# Changes/Update to eGMS FY23 IDEA Part B Application

9. Professional Development	No Changes
10a. Related Documents	Need to ensure MOE (1.4v extended) Completed calculator uploaded
10b. Related Documents (Consortia Members)	<b>NEW:</b> Consortia agreement is updated. <b>All Consortia members need to upload an updated agreement with each application</b>



# Validation see “Messages” – lead to the area of concern



## Sections

Test District (000-000) Test District - FY 2022 - IDEA - Rev 0

Application Status: Not Started

Change Status To: [Application Started](#)

[View CSDE History Log](#)

[View Change Log](#)

Description <small>(<a href="#">View Sections Only</a> <a href="#">View All Pages</a>)</small>	Validation	Print Select Items
All	<a href="#">Messages</a>	<a href="#">Print</a>
<input type="checkbox"/> History Log		<a href="#">Print</a>
<a href="#">History Log</a>		<a href="#">Print</a>
<a href="#">Create Comment</a>		
<input type="checkbox"/> Allocations		<a href="#">Print</a>
<a href="#">Allocations</a>		<a href="#">Print</a>
<input type="checkbox"/> Contacts		<a href="#">Print</a>
<a href="#">Contacts</a>		<a href="#">Print</a>
<input type="checkbox"/> IDEA Part B Information	<a href="#">Messages</a>	<a href="#">Print</a>
<a href="#">Assurances</a>		<a href="#">Print</a>
<a href="#">Fiscal Self-Assessment</a>		<a href="#">Print</a>
<a href="#">Private School Proportionate Share</a>	<a href="#">Messages</a>	<a href="#">Print</a>
<a href="#">CEIS</a>	<a href="#">Messages</a>	<a href="#">Print</a>
<a href="#">Program Options</a>		<a href="#">Print</a>



# Validation Messages

## Error and Warnings



CONNECTICUT STATE DEPARTMENT OF EDUCATION

### Validation Messages

Test District (000-000) Test District - FY 2022 - IDEA - Rev 0

[Return To Sections Page](#)

#### IDEA Part B Information

<a href="#">Review</a>	Private School Proportionate Share	Questions marked with an asterisk (*) require a response.	Error
<a href="#">Review</a>	CEIS	Questions marked with an asterisk (*) require a response.	Error
<a href="#">Review</a>	Excess Cost	Questions marked with an asterisk (*) require a response.	Error
<a href="#">Review</a>	Related Documents		

<a href="#">Review</a>	At least 1 document(s) must be uploaded for the required Related Document 'IDEA MOE Calculator 1.4'.	Error
<a href="#">Review</a>	The optional Related Document 'IDEA Consortium Letter of Agreement' has not been uploaded. Please be certain this is the intention.	Warning
<a href="#">Review</a>	The optional Related Document 'IDEA Consultation with Private Schools' has not been uploaded. Please be certain this is the intention.	Warning
<a href="#">Review</a>	The optional Related Document 'Other IDEA Documentation' has not been uploaded. Please be certain this is the intention.	Warning

[Return To Sections Page](#)



# CSDE Checklist

1. 1. Goals reflective for preschool and kindergarten (3-5-year olds)			
2. 2. Listed CEIS/CCEIS activities are aligned with the goals			
<input type="checkbox"/> 6. 619 - CCEIS/CEIS Budget	Not Applicable	Andrea Brinell	5/6/2021 11:38:45 AM
1. 1. Allocation is appropriately calculated			
2. 2. Line Items have adequate detail as needed			
<input type="checkbox"/> 7. 611 Public School Goals	OK	Tom Boudreau	5/6/2021 11:43:50 AM
1. Goals reflective for equitable access (3-21year olds)			
2. Listed activities are aligned with the goals.			
<input type="checkbox"/> 8. 611 Public School Budget	OK	Tom Boudreau	5/6/2021 11:43:50 AM
1. Allocations are appropriately aligned to goals			
2. Line Items have adequate detail as needed			
<input type="checkbox"/> 9. 611 - Private Schools Goals/Meeting	OK	Tom Boudreau	5/6/2021 11:43:50 AM
1. Goals reflective for Private School			
2. Listed activities are aligned with the goals			
3. Evidence that Meaning Consultation occurred with related document uploaded			
<input type="checkbox"/> 10. 611 - Private Schools Budget	OK	Tom Boudreau	5/6/2021 11:43:50 AM
1. Additional allocation is appropriately calculated (+/-)			
2. Line Items have adequate detail as needed			
<input type="checkbox"/> 11. 611 CCEIS/CEIS Goals	OK	Tom Boudreau	5/6/2021 11:43:50 AM
1. Goals reflective for CEIS/CCEIS			
2. Listed activities are aligned with the goals			
<input type="checkbox"/> 12. 611 - CCEIS/CEIS Budget	OK	Tom Boudreau	5/6/2021 11:43:50 AM
1. Allocation is appropriately calculated			
2. Line Items have adequate detail as needed			
<input type="checkbox"/> 13. LEA Maintenance of Effort (MOE)	OK	Tom Boudreau	5/6/2021 11:43:50 AM
1. Evidence MOE Calculator was completed			
2. Evidence MOE Calculator was completed			
3. Evidence MOE Compliance completed			
4. MOE Calculator(s) uploaded as a related document			
<input type="checkbox"/> 14. Excess Cost Calculation	OK	Tom Boudreau	5/6/2021 11:43:50 AM
1. Evidence Excess Cost was completed as needed			
<input type="checkbox"/> 15. Consortiums	OK	Tom Boudreau	5/6/2021 11:43:50 AM
1. Consortium letter is uploaded, signed and money broken down			
<input type="checkbox"/> 16. Revision Summary (Revisions only)	Not Reviewed		
1. Revision Summary explanation is acceptable			

# CSDE Checklist

## – Attention Needed

[-]	<b>4. 619 - Private Schools Budget</b>	Not Applicable	Andrea Brinnel	9/17/2021 3:36:19 PM
	1. 1. Additional allocation is appropriately calculated (+/-)			
	2. 2. Line Items have adequate detail as needed			
[-]	<b>5. 619 CEIS/CCEIS Goals</b>	Not Applicable	Tom Boudreau	2/14/2022 9:02:40 AM
	1. 1. Goals reflective for preschool and kindergarten (3-5-year olds)			
	2. 2. Listed CEIS/CCEIS activities are aligned with the goals			
[-]	<b>6. 619 - CCEIS/CEIS Budget</b>	Attention Needed	Andrea Brinnel	2/4/2022 7:57:15 AM
	1. 1. Allocation is appropriately calculated			<input type="checkbox"/>
	2. 2. Line Items have adequate detail as needed			<input type="checkbox"/>
	Please review the CEIS budget. \$10.50 in CEIS should be in the regular 619 budget.			
	[-] Comment History			
	Application Revision 2	Please review the CEIS budget. \$10.50 in CEIS should be in the regular 619 budget.	Andrea Brinnel	2/4/2022 7:57:15 AM
[-]	<b>7. 611 Public School Goals</b>	OK	Tom Boudreau	5/14/2021 1:41:57 PM
	1. Goals reflective for equitable access (3-21year olds)			
	2. Listed activities are aligned with the goals.			
[-]	<b>8. 611 Public School Budget</b>	OK	Tom Boudreau	2/14/2022 7:54:21 AM
	1. 1. Allocations are appropriately aligned to goals			

Session Timeout  
00:58:34



*IDEA Part B Grant Budget*  
&  
*ED 114 Budget Form with Line Item Codes*



# Budget Page

- View by Purpose
- Three separate budgets – with all three when completed are part of the whole allocation.

## Budget

School District Public School District - FY 2019 - IDEA - Rev 0 - IDEA 611

Go To 

[Upload Budget Data](#) | [Download Budget Data](#)

[Budget by Object](#)

Click to create Budget Detail

Amounts budgeted, Allocation and amount left to budget

Action	Purpose	Total
<a href="#">Modify</a>	01 - Public School Activities	\$300.00
<a href="#">Modify</a>	02 - Private School Activities	\$0.00
<a href="#">Modify</a>	03 - Coordinated Early Intervening Services Activities	\$0.00
<b>Total</b>		\$300.00
<b>Allocation</b>		\$1,000.00
<b>Remaining</b>		\$700.00



# Budget Details

## 611 Budget / 619 Budget

### Public School Activities Budget 01

- Allocations – determined by federal formula
- Use ED114 Budget Shell and Line Item Codes
- Explain breakdown of approximate budget in narrative description with enough description to identify connections
- Use the tagged goal/activity to align with line item

### Private School Activities Budget 02

- Set aside funds from allocations are determined by proportionate share federal formula and additional funds by LEA
- Use ED114 Budget Shell and Line Item Codes
- Explain breakdown of approximate budget in narrative description with enough description to identify connections
- Use the tagged goal/activity to align with line item

### CEIS Activities / CCEIS Activities Budget 03

- Set aside funds from allocations are determined for disabled/nondisabled students impacted by CCEIS when LEAs are identified for mandated 15% of award for comprehensive coordinated services / CEIS is determined by the LEA for up to 15% of the award for voluntary coordinated intervening services for high risk non-disabled students only.
- Use ED114 Budget Shell and Line Item Codes
- Explain breakdown of approximate budget in narrative description with enough description to identify connections
- Use the tagged goal/activity to align with line item



# IDEA Information Pages (cont.)

## SECTION 611 (3-21yr olds)

### **IDEA 611 Public School Activities Budget (01)**

(Tag 01 Budget Line Item to Public School Activities)

Line item with 611 goal/activity

### **IDEA 611 Private School Budget (02)**

(Tag 02 Budget Line Item - Private School Activities)

Line item with 611 Private School goal/activity

### **IDEA 611 Coordinated Early Intervening Services (CEIS) Budget (03)**

(Tag 03 Budget Line Item – CEIS/CCEIS Activities)

Line item with 611 CEIS goal/activity

## SECTION 619 (3-5yr olds)

### **IDEA 619 Public School Activities Budget (01)**

(Tag 01 Budget Line Item to Public School Activities)

Line item with 619 goal/activity

### **IDEA 619 Private School Budget (02)**

(Tag 02 Budget Line Item - Private School Activities)

Line item with 619 Private School goal/activity

### **IDEA 619 Coordinated Early Intervening Services (CEIS) Budget (03)**

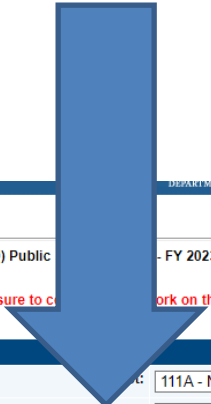
(Tag 03 Budget Line Item – CEIS/CCEIS Activities)

Line item with 619 CEIS goal/activity



# Budget Details

## Tag for 611 Public Schools (01) Budget



DEPARTMENT OF EDUCATION

**Create Budget Detail**

School District (002-000) Public - FY 2023 - IDEA - Rev 0 - IDEA 611

This is the TEST site. Please be sure to click on the LIVE site.

Budget Detail	Narrative Description
Object: 111A - Non-Instructional Salaries	

Budget Detail	Narrative Description
Object: 111A - Non-Instructional Salaries	
Purpose: 01 - Public School Activities	
611 Goals: (Select at least 1 tag(s))	
LEA / School: District (002-000)	
Quantity:	
Cost:	
Budget Detail Total:	

Total for all other Budget Details: \$659,252.00  
Allocation:   
Remaining:



# Changes/Updates to eGMS

## FY23 IDEA Part B Application

11.611 Budget	No Changes to 3 budgets (as needed) from one allocation
11a.IDEA 611 Tags	<b>NEW:</b> Need budget tag to align with goal/activity. ONLY Six Goals so make include line item activity in goal 01 Public School Activities Budget (line item)
11b.IDEA 619 Tags	<b>NEW:</b> Changed so goal/activity is to be “tagged” to 01 Public School Activities Budget (line item)
11c.IDEA 619 Goals Check Box	<b>NEW:</b> CHECK off at top: <b>*I understand that the following goals and activities delineated by line items in the 619 budget are connected with 3-5 year olds</b>
11d.IDEA Private School Goals	<b>NEW:</b> For both 611 and 619 – if appropriate ensure to write goal/tag activity to 02 Private School Activities Budget (line Item)
11e.IDEA CEIS Goals	<b>NEW:</b> For 611 and 619 (when needed) – if appropriate ensure to write goal/tag activity to 03 CEIS Activities Budget (line Item)



# Grant Budget NOTES

*(Highlights will be monitored closely)*

- LEAs should expend do **FIFO (first in/First out)** and ensure to expend “old money” before “new money”
- **All set-aside should be expended in year one** (if funds need to carry over into year two - please notify the BSE). If funds are not expended on activities within the allotted grant parameters – after year two – the remaining funds would need to be returned and the LEAs Fiscal Status in the IDEA Part B Fiscal Monitoring can be impacted.
- **A 10% administrative cap** applies to **line item 111A (Non-instructional Salaries)**. This includes administrators, supervisors and clerical staff: Break the approximate budgeted amount down and place in number of fulltime employee (FTE).
- **If on payroll** - paying benefits and regular staff place under **line item 111B (Instructional Salaries)**. Break the approximate budgeted amount down and place in number of FTE such as: 3.0 FTE Para Ed/ 1.5 FTE SpEd Teacher.
- **If under a contract with the district – not on payroll** - place staff under **line item 321 (Tutors)**.  
Break the approximate budgeted amount down and place in number of staff associated such as:  
3.0 Reading Tutors/ .5 Math Tutors
- If need staff need **certification or license** such as related services (SLP, SchPsy, OT or contract out) – **not on payroll** place under **line item 323 (Pupil Services-Nonpayroll)**. Break the approximate budgeted amount down and place in number of staff associated such as: 3.0 SLP/ 1.5 RN



## *IDEA Grant Budgets - ED 114*

LEAs should expend “old money” before “new money” and complete electronic budget revision requests in a timely manner (inclusive of a narrative and changes to budget line items).

### **SUPPLIES**

The purchase of Supplies/Equipment to support IDEA, including any for IEP implementation, require that all budgeted supply lines below:

- A. if above \$10,000 need approximate costs broken down
- B. and per unit costs of \$5,000 or more need to be explained (e.g., 3 Interactive Boards x \$7,195.95 = \$21,587.85).

\* Both consumable and non-consumable instructional supplies are categorized under 600.

\* In general, technology related supplies, both software and hardware, if less than \$1000 fall under code 650; if greater, use codes for technology related hardware (code 734) and technology software (code 735).

\* Purchase of equipment (code 730) is limited to instructional equipment that will allow eligible children to benefit from special education and related service.



*eGMS Budget*  
*INFORMATION*

Question: Is the 10 % rule still allowed.

**BGM Answer:**

**The rule in eGMS is you can expend by up to 110% of the amount budgeted on that line, not the total award times 10% as in the old system (which was applicable only to awards of \$100,000 or more). The idea is to prompt grantees to monitor their budgets more closely during the FY and file budget revisions as needed. - BGM**



# Budget Revision

- Electronic budget revision requests should be done in a timely manner (inclusive of a Revision Summary, narrative and changes to budget line items).
- Do multiple smaller revisions – rather than one big one.
- Emails are generated by the eGMS to the IDEA Part B Manager when a revision has been done.
- If older years (not current FY) for changes/corrections ... forward request but may require BGM involvement – Jeff Lindgren (860-713-6624)



# Revision Summary narrative – explains the “general” or Macro-changes use of funds.

## EXAMPLE Budget Revision

DEPARTMENT OF EDUCATION

eGMS Home

Administer ▶

Search ▶

Reports

Inbox ▶

Funding Application ▶

Fund Requests ▶

Grant Summary

LEA Document Library

Address Book

CSDE Resources

Information for this Page 1

### Revision Summary

[Redacted] Public School District - FY 2020 - IDEA - Rev 2 - Revision Summary

Go To ▶

\* Please provide a summary of why this revision is being completed?

Due to COVID, the District has needed to modify the grant as was written. Specifically: Teachers were not hired due to hiring and recruiting difficulties for in person teachers during COVID; increased training and coaching was required to assist teachers to provide successful interventions , special education supports and services in a hybrid and remote environment including [Redacted] - Co-teaching in a hybrid model, Rethink Autism coaching for SEL and ABA via hybrid interventions; there was reduced travel costs due to the ban on travel, additional instructional materials were required to provide instructional sets of materials for young children and SWDs with significant needs to access instruction at home, additional chromebooks and IPADs were required to support hybrid and remote learning including use of technology for staff and students; and additional software applications were required to support hybrid and remote learning including Don Johnston (UDL accommodations), rethink autism SEL and Mental Health on line library ad Voyager for Language LIVE and TransMath.



# Budget Revision

[Download Budget Data](#)

Budget Detail		Narrative Description
Object: 600 - Supplies - Technology/Instructional Purpose: 01 - Public School Activities LEA / School: ██████████ Quantity: <input type="text" value="1.00"/> Cost: <input type="text" value="\$23,510.00"/> Line Item Total: <input type="text" value="\$23,510.00"/>	January 2022 Revision: We would like to move forward with purchasing supplies to help support the implementation of high impact instructional strategies such as Marzano and Project CRISS, \$23,510.00.	
Object: 600 - Supplies - Technology/Instructional Purpose: 01 - Public School Activities LEA / School: ██████████ Quantity: <input type="text" value="1.00"/> Cost: <input type="text" value="\$16,512.48"/> Line Item Total: <input type="text" value="\$16,512.48"/>	Supplies for students with disabilities, \$12,500.	
Object: 600 - Supplies - Technology/Instructional Purpose: 02 - Private School Activities LEA / School: ██████████ Quantity: <input type="text" value="1.00"/> Cost: <input type="text" value="\$2,209.00"/> Line Item Total: <input type="text" value="\$2,209.00"/>	January 2022 Revision: Purchase instructional supplies for non-public special education students, \$2,209.	
Total for filtered Budget Details: <input type="text" value="\$42,231.48"/>		
Total for all other Budget Details: <input type="text" value="\$585,200.52"/>		
Total for all Budget Details: <input type="text" value="\$627,432.00"/>		



# Line Item narrative – explains the “specific” or Micro-changes to the line item use of funds.

## EXAMPLE – Budget Narrative

Address Book	<a href="#">Download Budget Data</a> << First   < Previous   1   Next >   Last >>   Items 1-1 out of 1   Items/Page: 10																												
CSDE Resources																													
Information for this Page <span style="float: right; background-color: #4F81BD; color: white; padding: 2px;">0</span>																													
Request Help																													
eGMS Sign Out																													
Boudreau, Tom Production Site	<table border="1" style="width: 100%; border-collapse: collapse;"> <thead> <tr> <th style="background-color: #4F81BD; color: white; padding: 5px;">Budget Detail</th> <th style="background-color: #4F81BD; color: white; padding: 5px;">Narrative Description</th> </tr> </thead> <tbody> <tr> <td style="padding: 5px;">Object: 600 - Supplies - Technology/Instructional</td> <td style="padding: 5px;">Additional Instructional Supplies were required for students at home during remote learning [REDACTED] class set up \$6,422 Lakeshore</td> </tr> <tr> <td style="padding: 5px;">Purpose: 01 - Public School Activities</td> <td style="padding: 5px;">Assorted OT supplies and materials for new OT staff \$4,371 School Specialties \$1,143 Lakeshore</td> </tr> <tr> <td style="padding: 5px;">LEA / School: [REDACTED]</td> <td style="padding: 5px;">55@ 498 On-line electronic testing supplies including protocols for Q Interactive and Q Global \$27,418 Pearson</td> </tr> <tr> <td style="padding: 5px;">Quantity: <input type="text" value="1.00"/></td> <td style="padding: 5px;">11 BOT Testing Kits @ 510 \$5,616 Pearson</td> </tr> <tr> <td style="padding: 5px;">Cost: <input type="text" value="\$106,096.00"/></td> <td style="padding: 5px;">11 OT Assessments - Bender VM Test including protocols @ 202 \$2,223 WPS</td> </tr> <tr> <td style="padding: 5px;">Line Item Total: <input type="text" value="\$106,096.00"/></td> <td style="padding: 5px;">30 BASC Assessment Kits @ 133 \$3,994 Pearson</td> </tr> <tr> <td></td> <td style="padding: 5px;">30 Sets of "Multi-sensory Literacy" text by Birsh and Carreker @ 227 \$6,816</td> </tr> <tr> <td></td> <td style="padding: 5px;">150 Personal Plexiglass Barriers 150 @ 101.16 Total \$15,175</td> </tr> <tr> <td colspan="2" style="text-align: right; padding: 5px;"> <b>Total for filtered Budget Details:</b> <input type="text" value="\$106,096.00"/> </td> </tr> <tr> <td colspan="2" style="text-align: right; padding: 5px;"> <b>Total for all other Budget Details:</b> <input type="text" value="\$2,151,449.00"/> </td> </tr> <tr> <td colspan="2" style="text-align: right; padding: 5px;"> <b>Total for all Budget Details:</b> <input type="text" value="\$2,257,545.00"/> </td> </tr> <tr> <td colspan="2" style="text-align: right; padding: 5px;"> <b>Allocation:</b> <input type="text" value="\$2,257,545.00"/> </td> </tr> <tr> <td colspan="2" style="text-align: right; padding: 5px;"> <b>Remaining:</b> <input type="text" value="\$0.00"/> </td> </tr> </tbody> </table>	Budget Detail	Narrative Description	Object: 600 - Supplies - Technology/Instructional	Additional Instructional Supplies were required for students at home during remote learning [REDACTED] class set up \$6,422 Lakeshore	Purpose: 01 - Public School Activities	Assorted OT supplies and materials for new OT staff \$4,371 School Specialties \$1,143 Lakeshore	LEA / School: [REDACTED]	55@ 498 On-line electronic testing supplies including protocols for Q Interactive and Q Global \$27,418 Pearson	Quantity: <input type="text" value="1.00"/>	11 BOT Testing Kits @ 510 \$5,616 Pearson	Cost: <input type="text" value="\$106,096.00"/>	11 OT Assessments - Bender VM Test including protocols @ 202 \$2,223 WPS	Line Item Total: <input type="text" value="\$106,096.00"/>	30 BASC Assessment Kits @ 133 \$3,994 Pearson		30 Sets of "Multi-sensory Literacy" text by Birsh and Carreker @ 227 \$6,816		150 Personal Plexiglass Barriers 150 @ 101.16 Total \$15,175	<b>Total for filtered Budget Details:</b> <input type="text" value="\$106,096.00"/>		<b>Total for all other Budget Details:</b> <input type="text" value="\$2,151,449.00"/>		<b>Total for all Budget Details:</b> <input type="text" value="\$2,257,545.00"/>		<b>Allocation:</b> <input type="text" value="\$2,257,545.00"/>		<b>Remaining:</b> <input type="text" value="\$0.00"/>	
Budget Detail	Narrative Description																												
Object: 600 - Supplies - Technology/Instructional	Additional Instructional Supplies were required for students at home during remote learning [REDACTED] class set up \$6,422 Lakeshore																												
Purpose: 01 - Public School Activities	Assorted OT supplies and materials for new OT staff \$4,371 School Specialties \$1,143 Lakeshore																												
LEA / School: [REDACTED]	55@ 498 On-line electronic testing supplies including protocols for Q Interactive and Q Global \$27,418 Pearson																												
Quantity: <input type="text" value="1.00"/>	11 BOT Testing Kits @ 510 \$5,616 Pearson																												
Cost: <input type="text" value="\$106,096.00"/>	11 OT Assessments - Bender VM Test including protocols @ 202 \$2,223 WPS																												
Line Item Total: <input type="text" value="\$106,096.00"/>	30 BASC Assessment Kits @ 133 \$3,994 Pearson																												
	30 Sets of "Multi-sensory Literacy" text by Birsh and Carreker @ 227 \$6,816																												
	150 Personal Plexiglass Barriers 150 @ 101.16 Total \$15,175																												
<b>Total for filtered Budget Details:</b> <input type="text" value="\$106,096.00"/>																													
<b>Total for all other Budget Details:</b> <input type="text" value="\$2,151,449.00"/>																													
<b>Total for all Budget Details:</b> <input type="text" value="\$2,257,545.00"/>																													
<b>Allocation:</b> <input type="text" value="\$2,257,545.00"/>																													
<b>Remaining:</b> <input type="text" value="\$0.00"/>																													
Session Timeout																													
00:58:49																													



## *Budget Revisions*

1. First year budget revisions are due on or before May 1<sup>st</sup>; final second-year budget revisions covering the entire two-year period must be received at least 60 days prior to the expiration of the grant period but recommended to be no later than February 1<sup>st</sup> of the second year.
2. All budgets are done electronically.
3. **Include a narrative in the appropriate box as to the reasons for the revisions.**



# IDEA Part B Grant

## More ... DATEs to know:

### **FY19 IDEA 7/1/18 - 6/30/20 (now 6/30/21) Part B Section 611/619 – “Ended”**

- Budget Revisions for second year completed by 2/1/20 (now 2/1/21)
- All funds obligated or expended by final date of grant 6/30/20 (now 2/1/21)
- All funds liquidated within 60 days of final date of grant (8/30/20) (now 8/30/21)

### **FY 20 IDEA 7/1/19 - 6/30/21 Part B Section 611/619 – “Second Year”**

- Budget Revisions for second year completed by 2/1/21
- All funds obligated or expended by final date of grant 6/30/21
- All funds liquidated within 60 days of final date of grant (8/30/21)

### **FY21 (7/1/20-6/30/22) IDEA Part B Sec. 611/619 - “Second Year”**

- Budget Revisions for second year completed by 2/1/22
- All funds obligated or expended by final date of grant 6/30/22
- All funds liquidated within 60 days (8/31/22) and closed out by the final date of grant (9/30/22)

### **FY22 (7/1/21-6/30/23) IDEA Part B Sec. 611/619 & FY22 ARP IDEA Sec. 611/619 - “First Year”**

- Budget revisions for first year to be completed by 5/1/22
- All set-aside funds obligated or expended by 6/30/22\*
- Budget Revisions for second year completed by 2/1/23
- All funds obligated or expended by final date of grant 6/30/23
- All funds liquidated within 60 days (8/31/23) and closed out by the final date of grant (9/30/23)

### **FY23 (7/1/22-6/30/24) IDEA Part B Sec. 611/619 – Subrecipient Application**

- Application will be posted on the CSDE website in 3/2022
- Application to be “started” in eGMS by 4/2022
- Applications can be completed and forwarded any time with a final due date in 5/2022
- Use FY22 IDEA Part B Section 611 and Section 619 final award as the preliminary amount
- Complete Final Award Reconciliation for FY23 IDEA Part B Sec 611/619 in eGMS by Fall 2022

\*In the past Connecticut has been required to return federal funds to the Office of Special Education Programs (OSEP) due to some districts have not fully liquidated IDEA Part B funds. Please ensure 100% of the IDEA Part B allocated funds are obligated and expended in a timely manner.



# **FY23 IDEA Part B LEA Subgrantee Application**

**Posting: March 10<sup>th</sup>**

**“Started”: April 1<sup>st</sup>**

**Due: any time until May 12<sup>th</sup>**

- **Recalculating Final Award (Summer / Early Fall)**
  - **Reconciliation is due 30 days after the final award has been posted/calculated (“Application Revision Started”)**
  - **LEA notified in eGMS of required *Revision Request***
    - **01 Public Budget Activities - address changes**
    - **02 Private School Budget Activities (Proportionate Share Calculation) - address changes (as needed)**
    - **03 CEIS Budget Activities - address any changes (as needed).**



“Man who stands in front of running car may get tired...

Man who stands behind running car – will be exhausted.”

- *Saying*



# QUESTIONS/COMMENTS?

